

Client

6 leading European Automotive Body Assembly Line Builders

Background

OEM Automotive body assembly suppliers to Daimler Chrysler, Ford, VW, BMW, Toyota, Audi, etc.

Mission

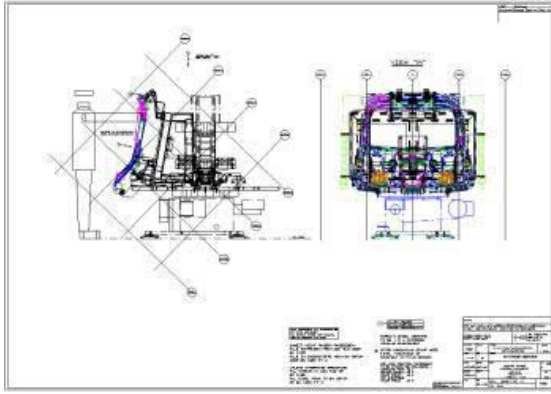
2D Manufacturing Detailing for Automotive body manufacturing fixtures for clamping, positioning, and moving.

Scope of Work

- Project management of 2D manufacturing Detailing multiple projects in short time span for different type of automotive bodies on different platforms.
- Integration of activities on various CAD platforms like CATIA V4, CATIA V5, FIDEAS
- Simultaneous management of multiple projects each with short cycle time.

Adroitec Solution

- Analysis of user's drawing standards for automating drawing templates, symbology, dimensioning, texts, etc.
- Front-end programming for visually-aided import of 3D solids data Programming for import/editing of design parameters.
- Linking to 2D software for automated generation of all 2D, section & isometric views



- Programming for integrating drawing views and templates into fully detailed manufacturing drawings
- Programming for data extraction for quantity estimation, BOM, costing, etc.
- Web deployment for engineering group, manufacturing, and vendor collaboration.

Value addition

- Elimination of in-process checking activities
- Automated updating of Enterprise Systems

Benefits to client

- Reduction in engineering Cycle time
- High cost benefits from off-shore production

